

# QUENTIA X<sup>®</sup>

Tablets 25, 100, 200mg

Quetiapine

## Daily Dose

	1.day	2.day	3.day	4.day	
<b>Schizophrenia</b>	50 mg	100 mg	200 mg	300 mg	to 750 mg
<b>Bipolar Mania</b>	100 mg	200 mg	300 mg	400 mg	to 800 mg

The usual dose is two times per day, with or without food. In older patients and patients with liver failure kidney problems the recommended starting dose is 25 mg per day.

**Indications:** Treatment of schizophrenia, Treatment of moderate to severe manic episode. **Contraindications:** Hypersensitivity to the active substance or any of the other ingredients of quetiapine. **Co-therapy with CYP3A4 inhibitors** such as HIV protease inhibitors, azol-antifungal agents (ketoconazole or itraconazole), antibiotics erythromycine or clarythromycine and nefazodone for depression. **Special warnings and precautions** Quentiax should be used with caution in patients with known cardiovascular disease, cerebrovascular disease, or other conditions that predispose to hypotension. It may cause orthostatic hypotension, especially during the initial dose titration period.

Caution is advised when using this drug in treating patients with a history of seizures. In patients with diabetes and patients with risk factors for developing diabetes recommend appropriate clinical monitoring. Caution is also required when prescribing medicines in combination with drugs that prolong the QT interval. This product contains lactose and patients with rare hereditary problems of galactose intolerance, the Lapp lactase deficiency, or glucose-galactose malabsorption should not take this medicine. **Interaction with other medicinal products and other forms of interaction.** Given the primary central nervous system effects of quetiapine should be used with caution in combination with

other centrally acting drugs and alcohol. Also, it is not recommended to be taken with grapefruit juice. Concomitant use of this medicine with hepatic enzyme inducers such as carbamazepine may substantially decrease systemic exposure to quetiapine. Depending on clinical response, higher doses of this medicine may need to be considered if Quentiax is used concomitantly with a hepatic enzyme inducer. **Use during pregnancy and lactation:** Quetiapine should only be used during pregnancy if the benefits justify the potential risks. Quetiapine is not safe to take if you are breastfeeding. Effects on ability to drive and use machines given its primary central nervous system effects, quetiapine may interfere with activities requiring mental alertness. Therefore, patients should be advised not to drive or operate machinery, until individual susceptibility to this is known.

**Adverse effects:** Adverse effects most frequently reported treatment with quetiapine are somnolence, dizziness, dry mouth, mild asthenia, constipation, tachycardia, orthostatic hypotension, and dyspepsia.

Other side effects are uncommon, rare or very rare.

**Supply:** 30 film-coated tablets of 100 mg, 200 mg.

**Date of information:** October 2016.

Further information is available from the manufacturer

### References

- 1 Small JG et al. Quetiapine in patients with schizophrenia. A high- and low-dose double-blind comparison with placebo. Arch Gen Psychiatry. 1997;54(6):549-57.
- 2 Bevec M, Dular M T. Review of clinical studies with Krka's antipsychotics in the treatment of schizophrenia and bipolar disorder. Krka Med Farm 2014; 26 (38).
- 3 Koda-Kimble MA, Allredge BK. Applied therapeutics : the clinical use of drugs. Philadelphia: Wolters Kluwer/Lippincott Williams & Wilkins; 2013
- 4 Jibson MD. Second-generation antipsychotic medications: Pharmacology, administration, and side effects. 2016. In: UpToDate
- 5 Haddad P. Weight change with atypical antipsychotics in the treatment of schizophrenia. J Psychopharmacol. 2005;19(6 Suppl):16-27.



Together for a healthy future

No. 58, 8<sup>th</sup> St. Kooyo Nasr (Gisha St.), Tehran, IR Iran.  
Postal Code: 1446863914, Tel: +98 (21) 41637000  
[www.actoverco.com](http://www.actoverco.com)



Bringing life in to harmony



# QUENTIA X<sup>®</sup>

Tablets 25, 100, 200mg

Quetiapine

ACT.MKT.CNS.07.1395.0101



Together for a healthy future



# QUENTIA X<sup>®</sup>

Tablets 25, 100, 200mg

Quetiapine



# QUENTIA X<sup>®</sup>

Tablets 25, 100, 200mg

Quetiapine

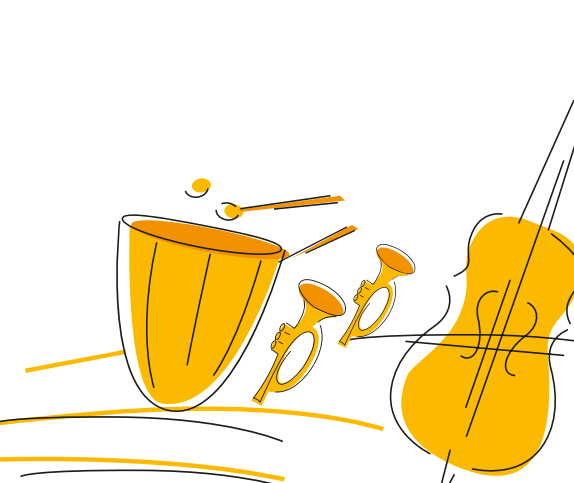
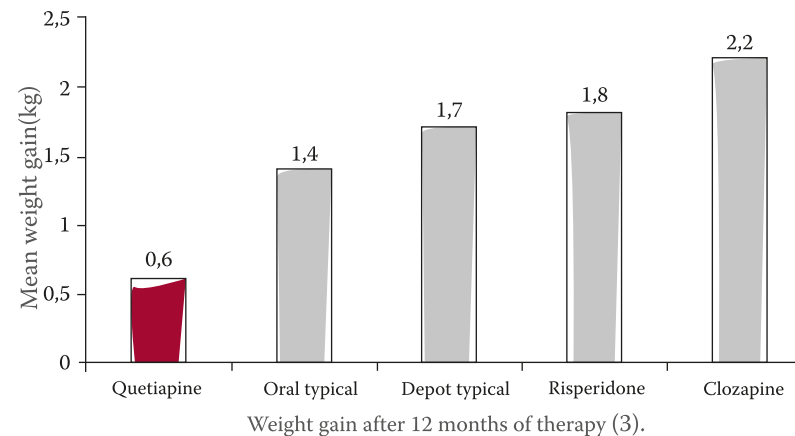


## Quetiapine versus other atypical antipsychotics (3,4)

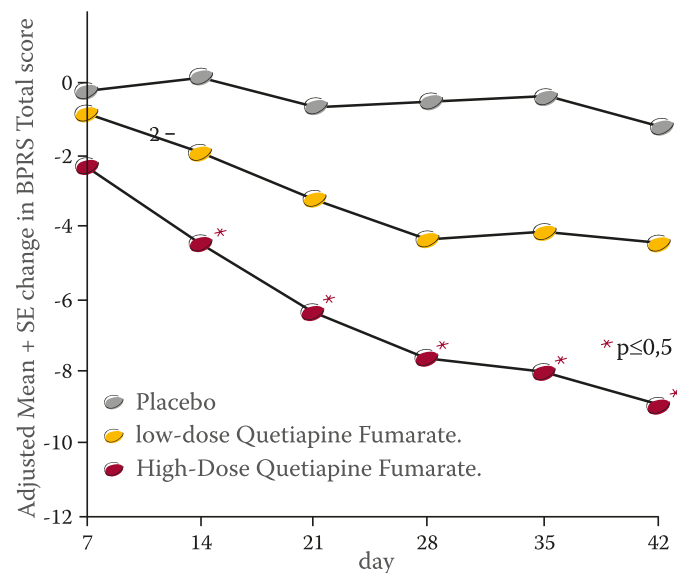
- No EPS (risperidone, zispraside)
- No prolactin level elevation (risperidone)
- No agranulocytosis (clozapine)
- No akathisia (aripiprazole)
- Less weight gain & diabetes mellitus (olanzapine, clozapine)



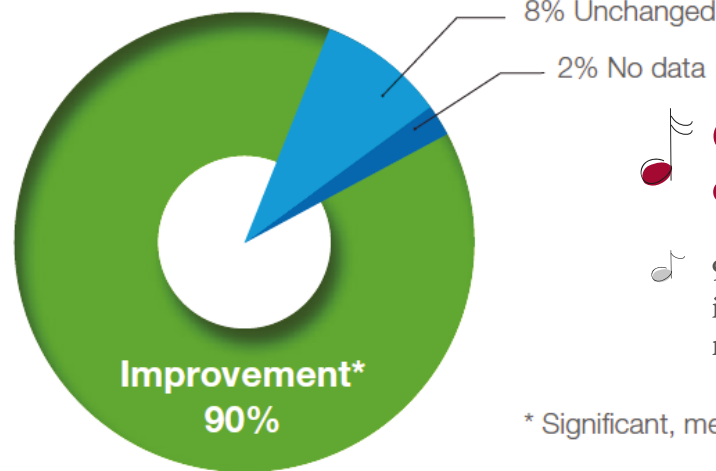
## Quetiapine has excellent weight gain profile in long-term treatment (5)



## Higher doses of quetiapine additionally decrease psychotic symptoms (1)



Patients with chronic or subchronic schizophrenia, 6 weeks treatment



## Quentiax – Conductor of safety and efficacy (2)

90 % percentage of patients achieved an improvement in schizophrenia and bipolar mania

\* Significant, medium and slight

